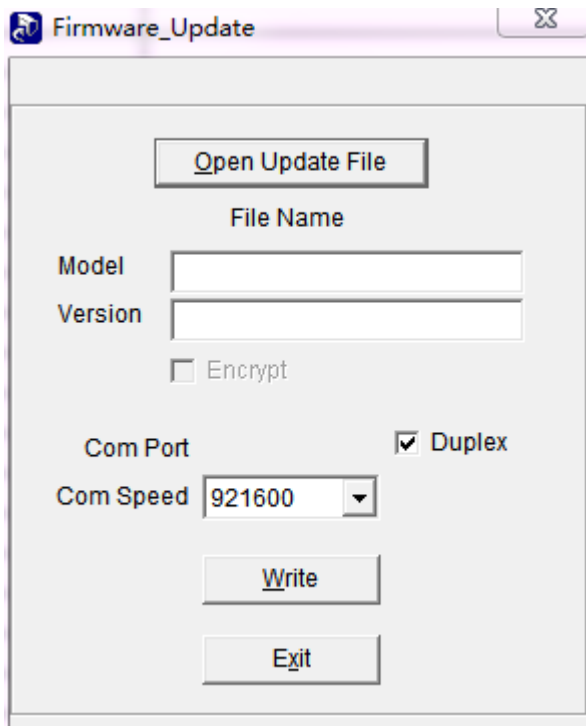


**Turn off the GPS and APRS functions to prevent the radio from going into TX when connected to the computer, as it may cause damage to the CPU or memory IC**

## Icon Updating

1. Hold pressing PTT key and PF2 key (the bottom side key), at the same time power on radio, LCD display UPDATE MODE
2. Use PC cable connect PC to radio
3. In CPS-> Set ->Set Com, choose the correct Com Port.
4. In CPS ->Tool, choose the firmware upgrade.



5. Click Open Update File , choose .spi (either Anyone Start up or Welcome Start up).
6. Com Speed 921600, tick on Duplex
7. Click Write to update the radio the latest firmware.
8. Reboot the radio when the update is finished.